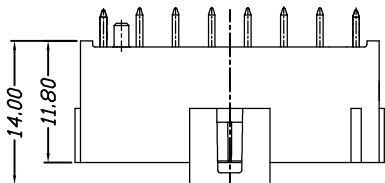


环保物料

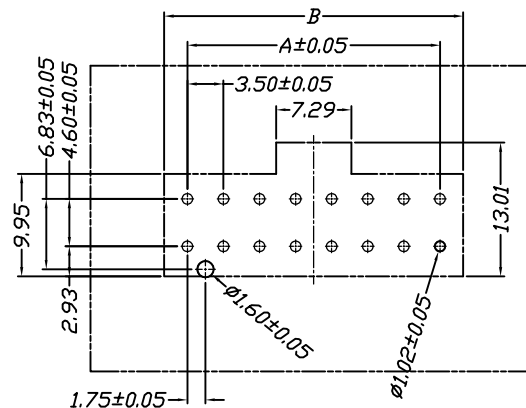
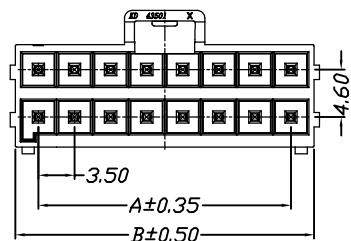
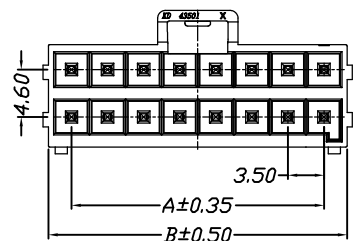
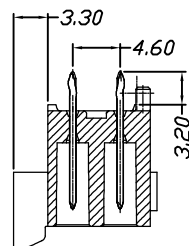
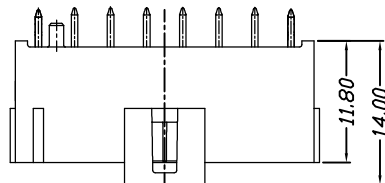
Specifications:

Voltage Rating : 250V AC/DC
 Current Rating : 7A AC,DC
 Withstand Voltage : 1500V AC/minute
 Contact Resistance : 20mΩ(MAX.)
 Insulation Resistance : 1000V DC/1000MΩ(MIN.)
 Temperature Range : -40°C~+120°C

43501W00-2XNP*-B3-**



43501W01-2XNP*-B3-**



P.C.B. LAYOUT

Part No	Dimensions	
	A	B
2*2P	3.50	8.00
2*3P	7.00	11.50
2*4P	10.50	15.00
2*5P	14.00	18.50
2*6P	17.50	22.00
2*7P	21.00	25.50
2*8P	24.50	29.00

Material	Color	PIN Material
LCP,UL94V-0	Black	Brass

				GENERAL TOLERANCES		SCALE:	NAME	DATE
				LINEAR	ANGLES	1:1		
				0.0±0.35	X° REF±6°	APPROVED		
AO	新图面发行	2018.7.28	UNIT: MM	0.00±0.25	X° ±3°	DESIGNER		
REV.	REVISION RECORD	DATE	SIZE: A4	0.000±0.15	X° X'±2°	DRAWN	肖坤权	2018.7.28



PART NO:
43501W0*-2XNP*-B3-**

DWG. NO:
ENDE05

TITLE:
3.50mm pitch Dual Wafer

REV: AO SHEET: 1/1