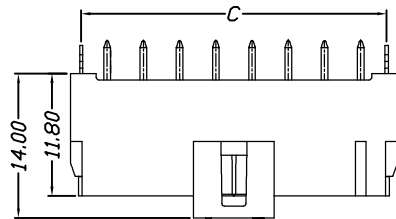


环保物料

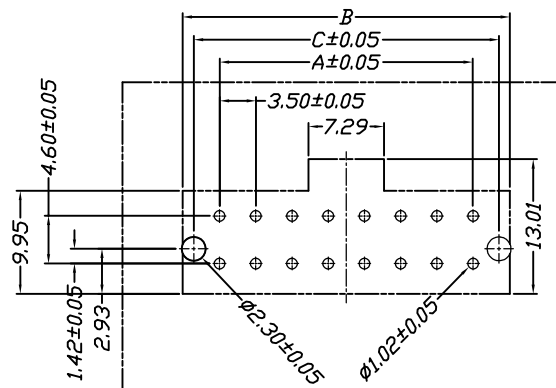
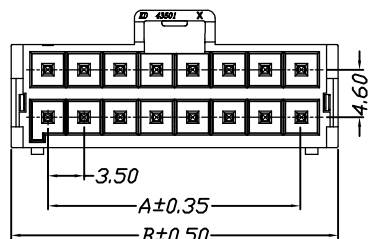
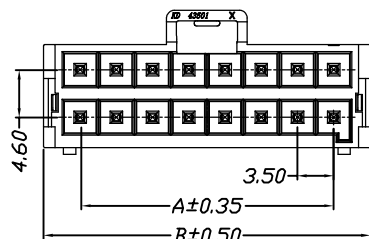
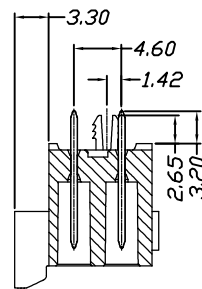
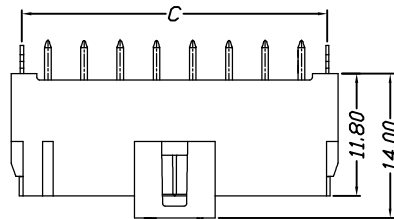
Specifications:

Voltage Rating : 250V AC/DC
 Current Rating : 7A AC,DC
 Withstand Voltage : 1500V AC/minute
 Contact Resistance : 20mΩ(MAX.)
 Insulation Resistance : 1000V DC/1000MΩ(MIN.)
 Temperature Range : -40°C~+120°C

43501W00-2XNP*-B2-**



43501W01-2XNP*-B2-**



P.C.B. LAYOUT

Part No	Dimensions		
	A	B	C
2*2P	3.50	10.60	8.50
2*3P	7.00	14.10	12.00
2*4P	10.50	17.60	15.50
2*5P	14.00	21.10	19.00
2*6P	17.50	24.60	22.50
2*7P	21.00	28.10	26.00
2*8P	24.50	31.60	29.50

Material	Color	PIN Material
LCP,UL94V-0	Black	Brass

				GENERAL TOLERANCES		SCALE:	NAME	DATE
				LINEAR	ANGLES	1:1		
				0.0±0.35	X° REF±6°	APPROVED		
AO	新图面发行	2018.7.28	UNIT: MM	0.00±0.25	X° ±3°	DESIGNER		
REV.	REVISION RECORD	DATE	SIZE: A4	0.000±0.15	X° X'±2°	DRAWN	肖坤权	2018.7.28

康导新能源
 网址: www.dgconne.com 电话: 0769-85337633
 邮箱: 2850175986@qq.com 传真: 0769-85392827

TITLE:
3.50mm pitch Dual Wafer

PART NO:	43501W0*-2XNP*-B2-**	
DWG. NO:	ENDE05	
REV:	AO	SHEET: 1/1