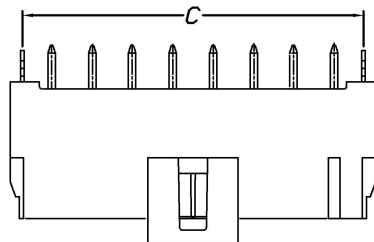
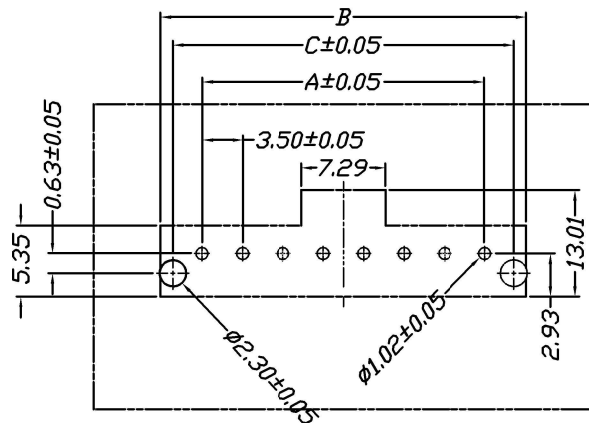
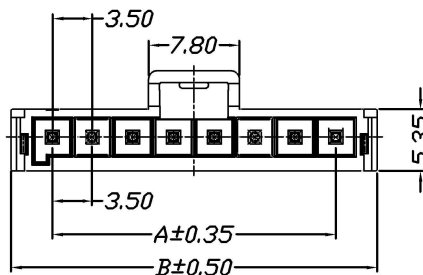
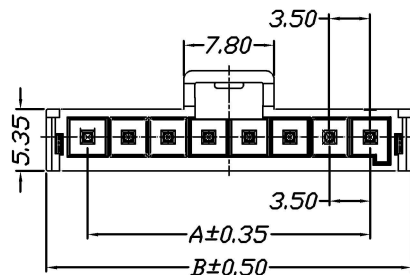
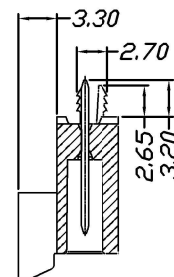
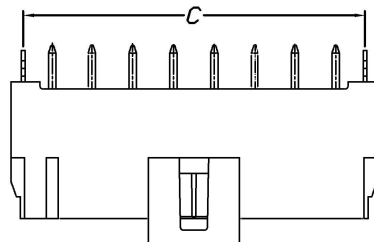


环保物料

STP43501W01-NP*-B2-**



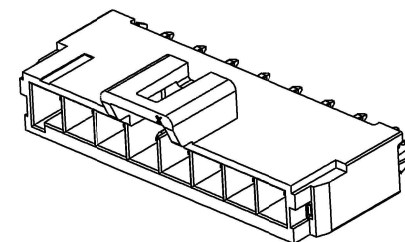
STP43501W01-NP*-B2-**



P.C.B. LAYOUT

Specifications:

- Voltage Rating : 250V AC/DC
- Current Rating : 7A AC,DC
- Withstand Voltage : 1500V AC/minute
- Contact Resistance : 40mΩ(MAX.)
- Insulation Resistance : 1000V DC/1000MΩ(MIN.)
- Temperature Range : -40°C~+120°C



Poles	Dimensions		
	A	B	C
2P	3.50	10.60	8.50
3P	7.00	14.10	12.00
4P	10.50	17.60	15.50
5P	14.00	21.10	19.00
6P	17.50	24.60	22.50
7P	21.00	28.10	26.00
8P	24.50	31.60	29.50

Material	Color	PIN Material
LCP	Black	Brass/Tin-plated

REV.		REVISION RECORD	DATE	SIZE: A4	GENERAL TOLERANCES	SCALE: 1:1	NAME	DATE	<p>康导新能源 网址: www.dgonne.com 电话: 0769-85337633 邮编: 2850175988@qq.com 传真: 0769-85392627</p>	PART. NO:	
A0	新图面发行	2018. 7. 28	UNIT: MM	0.00±0.25	X° ±3°	APPROVED				43501W0*-NF*-B2-**	
				0.000±0.15	X° X'±2°	DESIGNER				DWG. NO:	
						DRAWN	肖坤权	2018. 7. 28		ENDE05	
									TITLE:	REV: A0	SHEET: 1/1

康导新能源
网址: www.dgonne.com 电话: 0769-85337633
邮编: 2850175988@qq.com 传真: 0769-85392627

3.50mm pitch Single Wafer