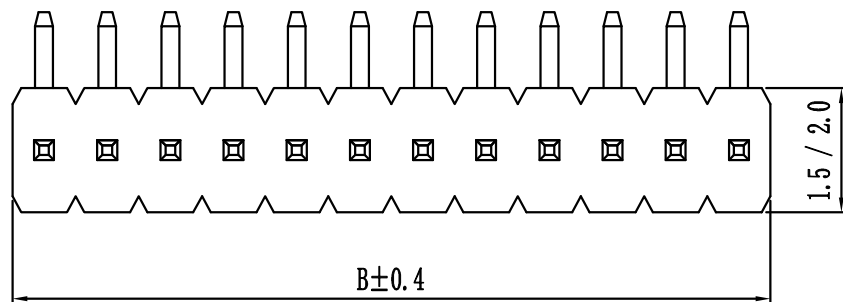
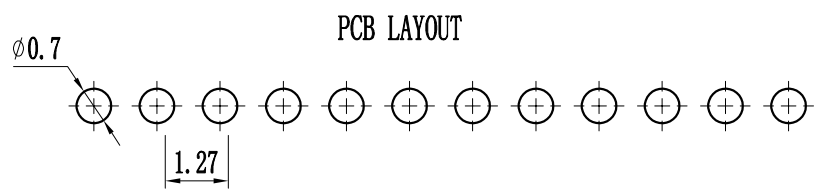
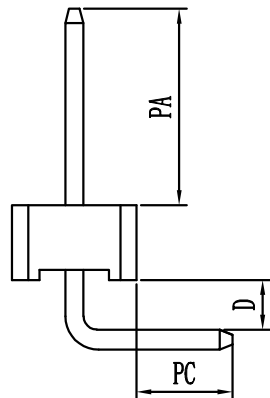
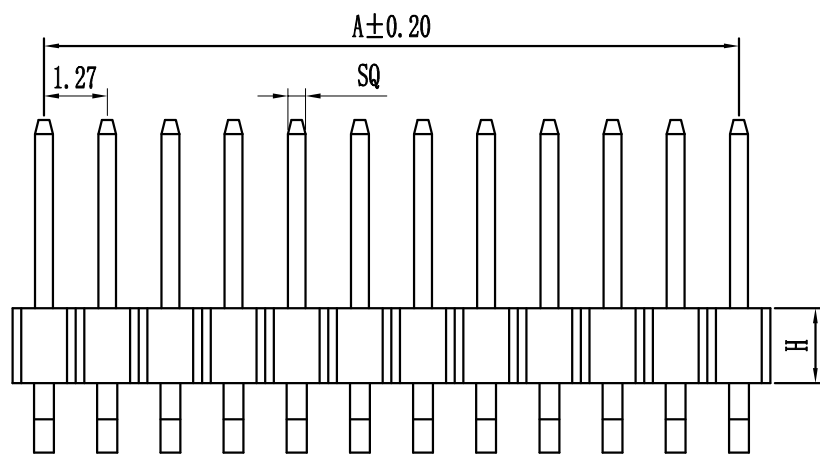


环保物料

| Pin数 | 尺寸A | 尺寸B |
|------|-------|-------|
| 1X1 | - | 1.27 |
| 1X2 | 1.27 | 2.54 |
| 1X3 | 2.54 | 3.81 |
| 1X4 | 3.81 | 5.08 |
| 1X5 | 5.08 | 6.35 |
| 1X6 | 6.35 | 7.62 |
| 1X7 | 7.62 | 8.89 |
| 1X8 | 8.89 | 10.16 |
| 1X9 | 10.16 | 11.43 |
| 1X10 | 11.43 | 12.70 |
| 1X11 | 12.70 | 13.97 |
| 1X12 | 13.97 | 15.24 |
| 1X13 | 15.24 | 16.51 |
| 1X14 | 16.51 | 17.78 |
| 1X15 | 17.78 | 19.05 |
| 1X16 | 19.05 | 20.32 |
| 1X17 | 20.32 | 21.59 |
| 1X18 | 21.59 | 22.86 |
| 1X19 | 22.86 | 24.13 |
| 1X20 | 24.13 | 25.40 |
| 1X21 | 25.40 | 26.67 |
| 1X22 | 26.67 | 27.94 |
| 1X23 | 27.94 | 29.21 |
| 1X24 | 29.21 | 30.48 |
| 1X25 | 30.48 | 31.75 |
| 1X26 | 31.75 | 33.02 |
| 1X27 | 33.02 | 34.29 |
| 1X28 | 34.29 | 35.56 |
| 1X29 | 35.56 | 36.83 |
| 1X30 | 36.83 | 38.10 |
| 1X31 | 38.10 | 39.37 |
| 1X32 | 39.37 | 40.64 |
| 1X33 | 40.64 | 41.91 |
| 1X34 | 41.91 | 43.18 |
| 1X35 | 43.18 | 44.45 |
| 1X36 | 44.45 | 45.72 |
| 1X37 | 45.72 | 46.99 |
| 1X38 | 46.99 | 48.26 |
| 1X39 | 48.26 | 49.53 |
| 1X40 | 49.53 | 50.80 |
| 1X41 | 50.80 | 52.07 |
| 1X42 | 52.07 | 53.34 |
| 1X43 | 53.34 | 54.61 |
| 1X44 | 54.61 | 55.88 |
| 1X45 | 55.88 | 57.15 |
| 1X46 | 57.15 | 58.42 |
| 1X47 | 58.42 | 59.69 |
| 1X48 | 59.69 | 60.96 |
| 1X49 | 60.96 | 62.23 |
| 1X50 | 62.23 | 63.50 |



| |
|------|
| SQ |
| 0.40 |
| 0.46 |



Specification:
 Current Rating : 1AMP
 Temperature Range : -40°Cto+105°C
 Contact Resistance : 20mΩ Max
 Insulation Resistance : 1000MΩ Min
 Withstanding Voltage : AC 500V
 Material:
 Insulator : Polyester (UL94V-0)
 Standard:PBT/PA6T/LCP
 Contact: Brass
 Plating : Au or Sn Over 50u" Ni

| Height |
|--|
| H=0.65mm、1.0MM、1.5mm、1.7mm、2.0mm、2.5mm |

| | | | | |
|---|---|---|---|--|
| P 12 9D-XXX X X -XX-X-XXX ① ② ③ ④ ⑤ ⑥ ⑦ ⑧ ⑨ | | | | |
| ① Series No: P=Pin Header F=Female Header B=Box Header E=Ejector Header | ② Pitch: 08=0.80 10=1.00 12=1.27 20=2.00 25=2.54 39=3.96 50=5.08 | ③ Tail/Mounting Style: 9D=Right Angle DIP Type 9S=Straight SMT Type 0D=Straight DIP Type 0S=Horizontal SMT Type | ④ No. of Pins: Single Row Double Row 101=1*1Pin 201=2*1Pin 102=1*2Pin 202=2*2Pin ! ! ! 140=1*40pin 240=2*40pin | ⑤ Insulator Color: A:Black B:Brown C:Red D:Orange E:Yellow F:Green G:Blue H:Violet J:Gray K:White P:Light Blue |
| ⑥ Material Type: A-PBT B-PA46 C-PA6T D-PA9T E-LCP | ⑦ Plating Type: 0#-Sn-Au 1#-Ni 2#-Sn 3#-Matte-Tin 5#-Au 0A-Sn-Au 1u" 0F-Sn-Au 10u" 5A-Au 1u" 0B-Sn-Au 2u" 0G-Sn-Au 15u" 5B-Au 2u" 0C-Sn-Au 3u" 0H-Sn-Au 30u" 5C-Au 3u" 0D-Sn-Au 4u" 0I-Sn-Au 40u" ! 0E-Sn-Au 5u" 0J-Sn-Au 50u" 5J-Au 50u" | ⑧ RoHS Request: 0:No Request 1:RoHS 2:HF (Halogen Free) | ⑨ Customer Code | |

| | | | | | | | | | | | | | | | | | |
|------|--|-----------------|--|--------------------|--|---------------|--|------------|--|----------|--|--|--|------------------------|--|----------------------|--|
| | | | | GENERAL TOLERANCES | | SCALE: 1:1 | | NAME | | DATE | | 康 导 新 能 源 网址: www.dgoonne.com 电话: 0769-86337633 邮箱: 2850175988@qq.com 传真: 0769-86392627 | | PART. NO: KDPH-0023 | | | |
| | | | | LINEAR | | ANGLES | | APPROVED | | 黎腾 | | | | 2017.06.16 | | DWG. NO: ENDE0023 | |
| | | | | 0.00±0.25 | | X° REF±6° | | DESIGNER | | 肖坤权 | | | | 2017.06.16 | | REV: AO | |
| AO | | 新图面发行 | | 2017.06.16 | | UNIT: MM | | DRAWN | | 旷淇 | | | | 2017.06.16 | | SHEET: 1/1 | |
| REV. | | REVISION RECORD | | DATE | | SIZE: A4 | | 0.000±0.08 | | X° X'±2° | | TITLE: Pitch1.27mm Pin Header, Singel Plastic, Single Row, Right Angle Type | | | | | |