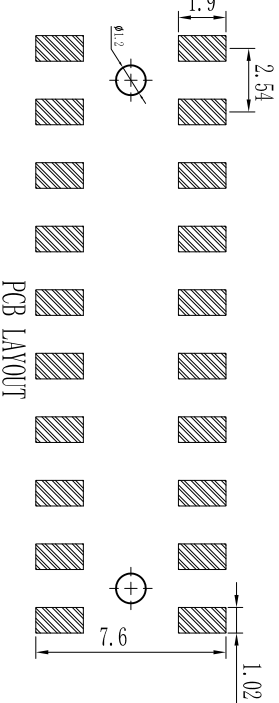
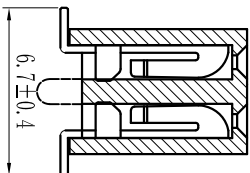
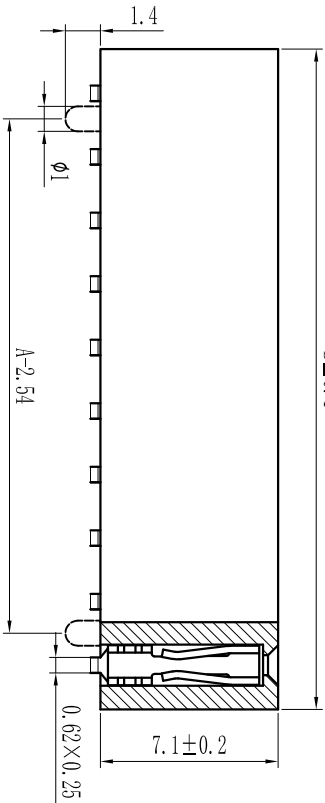
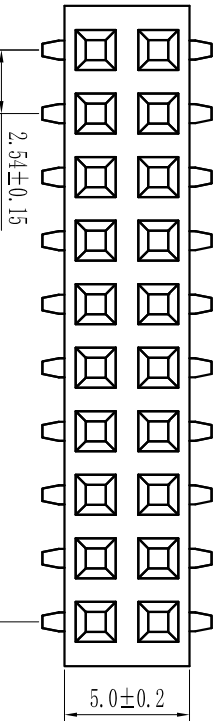


环保物料

Pin#	尺寸#	尺寸#
2x2	2.54	5.58
2x3	5.08	8.12
2x4	7.62	10.66
2x5	10.16	13.20
2x6	12.70	15.74
2x7	15.24	18.28
2x8	17.78	20.82
2x9	20.32	23.36
2x10	22.86	25.90
2x11	25.40	28.44
2x12	27.94	30.98
2x13	30.48	33.52
2x14	33.02	36.06
2x15	35.56	38.60
2x16	38.10	41.14
2x17	40.64	43.68
2x18	43.18	46.22
2x19	45.72	48.76
2x20	48.26	51.30
2x21	50.80	53.84
2x22	53.34	56.38
2x23	55.88	58.92
2x24	58.42	61.46
2x25	60.96	64.00
2x26	63.50	66.54
2x27	66.04	69.08
2x28	68.58	71.62
2x29	71.12	74.16
2x30	73.66	76.70
2x31	76.20	79.24
2x32	78.74	81.78
2x33	81.28	84.32
2x34	83.82	86.86
2x35	86.36	89.40
2x36	88.90	91.94
2x37	91.44	94.48
2x38	93.98	97.02
2x39	96.52	99.56
2x40	99.06	102.10



PCB LAYOUT

Specification:
Current Rating : 3AMP
Temperature Range : -40°C to +105°C
Contact Resistance : 20mΩ Max
Insulation Resistance : 1000MΩ Min
Withstanding Voltage : AC 1000V

Material:
Insulator : Polyester (UL94V-0)
Standard: PA6T/LCP

Contact: Bronze
Plating : Au or Sn Over 50u" Ni

F 25 0D-XXX X X-XX-X-XXX
① ② ③ ④ ⑤ ⑥ ⑦ ⑧ ⑨ ⑩ ⑪ ⑫

① Series No:	② Pitch:	③ Ratiocounting Style:	④ No. of Pins:	⑤ Insulator Color:
P-pin Header	08=1.80	9=Right Angle DIP Type	Single Row	At:Black B:Brown C:Red
F-flexible Header	10=1.00	9S=Strait SMT Type	20=2x10in	D:Orange E:Yellow F:Green
D-flex Header	12=1.27	0S=Strait DIP Type	100=4x25in	G:Blue H:Violet J:Grey
H-flex Header	20=2.00	0S=Horizontal SMT Type	1=1	K:White L:Light Blue
	25=2.54		2=2	
	39=3.96		14=14	
	50=5.08		20=20	
⑥ Material Type:	⑦ Plating Type:	⑧ Notes Request:	⑨ Customer Code:	
A-FR0	0=Sn+Au 15=11 28=Sn 38=Nickel+Tin 58=Au			
B-FR46	01=Sn+Au 11 07=Sn+Au 10u" 50=Au 11u"			
C-FR07	08=Sn+Au 2u" 05=Sn+Au 15u" 55=Au 2u"			
D-FR07	0C=Sn+Au 3u" 0H=Sn+Au 30u" 5C=Au 3u"			
E-LCP	0P=Sn+Au 4u" 0I=Sn+Au 40u"			
	0J=Sn+Au 5u" 0L=Sn+Au 50u" 5J=Au 50u"			

REV. A0		REVISION RECORD		DATE		UNIT: MM		SIZE: A4		0.000±0.08		X° X'±2°		X° REF±6°		0.0±0.25		L INEAR		GENERAL TOLERANCES		SCALE: 1:1		NAME		DATE		TITLE:		PART NO:		REV:		SHEET:			
1		2		3		4		5		6		7		8		H		G		F		E		D		C		B		A		H		G			
新图面发行		2017.06.16		2017.06.16		2017.06.16		2017.06.16		2017.06.16		2017.06.16		2017.06.16		2017.06.16		2017.06.16		2017.06.16		2017.06.16		2017.06.16		2017.06.16		2017.06.16		2017.06.16		2017.06.16		2017.06.16			
肖坤权		肖坤权		肖坤权		肖坤权		肖坤权		肖坤权		肖坤权		肖坤权		肖坤权		肖坤权		肖坤权		肖坤权		肖坤权		肖坤权		肖坤权		肖坤权		肖坤权		肖坤权		肖坤权	
2017.06.16		2017.06.16		2017.06.16		2017.06.16		2017.06.16		2017.06.16		2017.06.16		2017.06.16		2017.06.16		2017.06.16		2017.06.16		2017.06.16		2017.06.16		2017.06.16		2017.06.16		2017.06.16		2017.06.16		2017.06.16			
Pitch2.54mm Female Header, Dual Row, Plastic Height 7.1mm, SMT Type (O)		Pitch2.54mm Female Header, Dual Row, Plastic Height 7.1mm, SMT Type (O)		Pitch2.54mm Female Header, Dual Row, Plastic Height 7.1mm, SMT Type (O)		Pitch2.54mm Female Header, Dual Row, Plastic Height 7.1mm, SMT Type (O)		Pitch2.54mm Female Header, Dual Row, Plastic Height 7.1mm, SMT Type (O)		Pitch2.54mm Female Header, Dual Row, Plastic Height 7.1mm, SMT Type (O)		Pitch2.54mm Female Header, Dual Row, Plastic Height 7.1mm, SMT Type (O)		Pitch2.54mm Female Header, Dual Row, Plastic Height 7.1mm, SMT Type (O)		Pitch2.54mm Female Header, Dual Row, Plastic Height 7.1mm, SMT Type (O)		Pitch2.54mm Female Header, Dual Row, Plastic Height 7.1mm, SMT Type (O)		Pitch2.54mm Female Header, Dual Row, Plastic Height 7.1mm, SMT Type (O)		Pitch2.54mm Female Header, Dual Row, Plastic Height 7.1mm, SMT Type (O)		Pitch2.54mm Female Header, Dual Row, Plastic Height 7.1mm, SMT Type (O)		Pitch2.54mm Female Header, Dual Row, Plastic Height 7.1mm, SMT Type (O)		Pitch2.54mm Female Header, Dual Row, Plastic Height 7.1mm, SMT Type (O)		Pitch2.54mm Female Header, Dual Row, Plastic Height 7.1mm, SMT Type (O)		Pitch2.54mm Female Header, Dual Row, Plastic Height 7.1mm, SMT Type (O)		Pitch2.54mm Female Header, Dual Row, Plastic Height 7.1mm, SMT Type (O)			
ENDE1227		ENDE1227		ENDE1227		ENDE1227		ENDE1227		ENDE1227		ENDE1227		ENDE1227		ENDE1227		ENDE1227		ENDE1227		ENDE1227		ENDE1227		ENDE1227		ENDE1227		ENDE1227		ENDE1227		ENDE1227		ENDE1227	
1/1		1/1		1/1		1/1		1/1		1/1		1/1		1/1		1/1		1/1		1/1		1/1		1/1		1/1		1/1		1/1		1/1		1/1			



PART NO: KDPH-0227

FIG. NO: ENDE1227

REV: A0 SHEET: 1/1