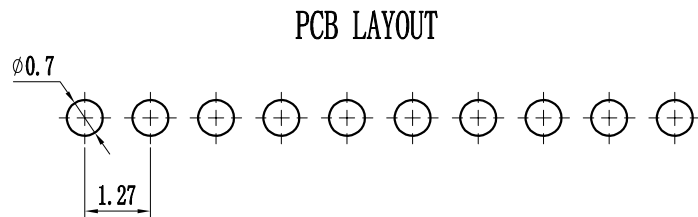
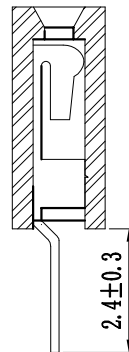
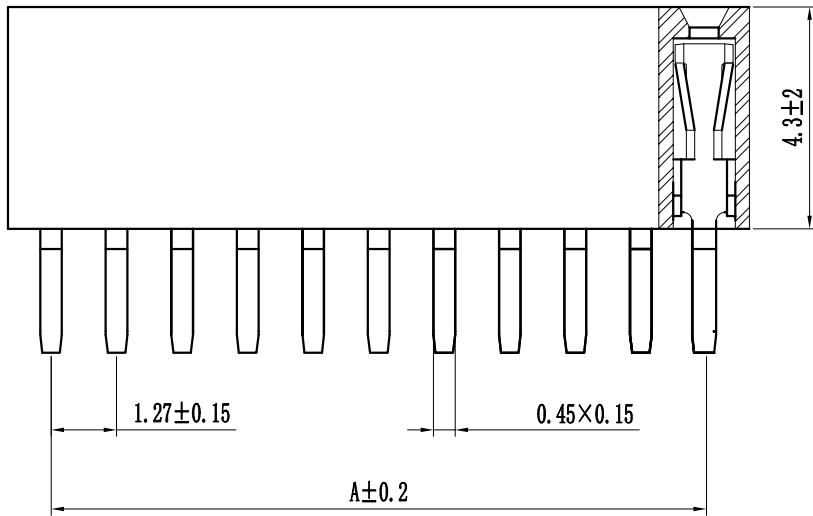
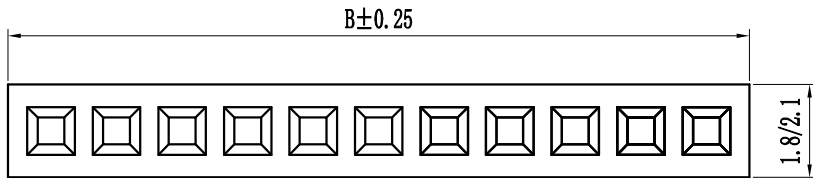


环保物料

| Pin数 | 尺寸A | 尺寸B |
|------|-------|-------|
| 1x2 | 1.27 | 2.94 |
| 1x3 | 2.54 | 4.21 |
| 1x4 | 3.81 | 5.48 |
| 1x5 | 5.08 | 6.75 |
| 1x6 | 6.35 | 8.02 |
| 1x7 | 7.62 | 9.29 |
| 1x8 | 8.89 | 10.56 |
| 1x9 | 10.16 | 11.83 |
| 1x10 | 11.43 | 13.10 |
| 1x11 | 12.70 | 14.37 |
| 1x12 | 13.97 | 15.64 |
| 1x13 | 15.24 | 16.91 |
| 1x14 | 16.51 | 18.18 |
| 1x15 | 17.78 | 19.45 |
| 1x16 | 19.05 | 20.72 |
| 1x17 | 20.32 | 21.99 |
| 1x18 | 21.59 | 23.26 |
| 1x19 | 22.86 | 24.53 |
| 1x20 | 24.13 | 25.80 |
| 1x21 | 25.40 | 27.07 |
| 1x22 | 26.67 | 28.34 |
| 1x23 | 27.94 | 29.61 |
| 1x24 | 29.21 | 30.88 |
| 1x25 | 30.48 | 32.15 |
| 1x26 | 31.75 | 33.42 |
| 1x27 | 33.02 | 34.69 |
| 1x28 | 34.29 | 35.96 |
| 1x29 | 35.56 | 37.23 |
| 1x30 | 36.83 | 38.50 |
| 1x31 | 38.10 | 39.77 |
| 1x32 | 39.37 | 41.04 |
| 1x33 | 40.64 | 42.31 |
| 1x34 | 41.91 | 43.58 |
| 1x35 | 43.18 | 44.85 |
| 1x36 | 44.45 | 46.12 |
| 1x37 | 45.72 | 47.39 |
| 1x38 | 46.99 | 48.66 |
| 1x39 | 48.26 | 49.93 |
| 1x40 | 49.53 | 51.20 |
| 1x41 | 50.80 | 52.47 |
| 1x42 | 52.07 | 53.74 |
| 1x43 | 53.34 | 55.01 |
| 1x44 | 54.61 | 56.28 |
| 1x45 | 55.88 | 57.55 |
| 1x46 | 57.15 | 58.82 |
| 1x47 | 58.42 | 60.09 |
| 1x48 | 59.69 | 61.36 |
| 1x49 | 60.96 | 62.63 |
| 1x50 | 62.23 | 63.90 |



Specification:
 Current Rating : 1AMP
 Temperature Range : -40°Cto+105°C
 Contact Resistance : 20mΩ Max
 Insulation Resistance : 1000MΩ Min
 Withstanding Voltage : AC 500V
 Material:
 Insulator : Polyester (UL94V-0)
 Standard:PBT/PA6T/LCP
 Contact: Bronze
 Plating : Au or Sn Over 50u" Ni

| F 12 0D-XXX X X-XX-X-XXX | | | | |
|---|---|---|---|--|
| ① | ② | ③ | ④ | ⑤ |
| ① Series No: P=Pin Header F=Female Header B=Box Header E=Ejector Header | ② Pitch: 08=0.80 10=1.00 12=1.27 20=2.00 25=2.54 39=3.96 50=5.08 | ③ Tail/Mounting Style: 9D=Right Angle DIP Type 9S=Straight SMT Type 0D=Straight DIP Type 0S=Horizontal SMT Type | ④ No. of Pins: Single Row 101=1*1Pin 102=1*2Pin i i i i 140=1*40pin 240=2*40pin | ⑤ Insulator Color: A:Black B:Brown C:Red D:Orange E:Yellow F:Green G:Blue H:Violet J:Gray K:White P:Light Blue |
| ⑥ Material Type: A=PBT B-PA46 C-PA6T D-PA9T E-LCP | ⑦ Plating Type: 0*-Sn-Au 1*-Ni 2*-Sn 3*-Matte-Tin 5*-Au 0A-Sn-Au 1u" 0F-Sn-Au 10u" 5A-Au 1u" 0B-Sn-Au 2u" 0G-Sn-Au 15u" 5B-Au 2u" 0C-Sn-Au 3u" 0H-Sn-Au 30u" 5C-Au 3u" 0D-Sn-Au 4u" 0I-Sn-Au 40u" 0E-Sn-Au 5u" 0J-Sn-Au 50u" 5J-Au 50u" | ⑧ RoHS Request: 0:No Request 1:RoHS 2:HF (Halogen Free) | ⑨ Customer Code | |

| GENERAL TOLERANCES | | SCALE: | NAME | DATE | 康导新能源 网址: www.dgoonne.com 电话: 0760-85337833 邮箱: 2850175888@qq.com 传真: 0760-85392827 | PART. NO: | | | | | |
|--------------------|-----------------|------------|----------|------------|---|-----------|---|------|----|--------|-----|
| LINEAR | ANGLES | 1:1 | 黎腾 | 2017.06.16 | | KDFH-0043 | | | | | |
| 0.0±0.25 | X° REF±6° | APPROVED | 肖坤权 | 2017.06.16 | | DWG. NO: | | | | | |
| 0.00±0.15 | X° ±3° | DESIGNER | 旷淇 | 2017.06.16 | | ENDE1043 | | | | | |
| REV. | REVISION RECORD | DATE | SIZE: A4 | 0.000±0.08 | X° X'±2° | DRAWN | TITLE: Pitch1.27mm Female Header, Single Row, Plastic Height 4.3mm, DIP (0) | REV: | AO | SHEET: | 1/1 |
| 1 | 新图面发行 | 2017.06.16 | UNIT: MM | 0.00±0.15 | X° ±3° | | | | | | |
| 2 | REVISION RECORD | DATE | SIZE: A4 | 0.000±0.08 | X° X'±2° | | | | | | |