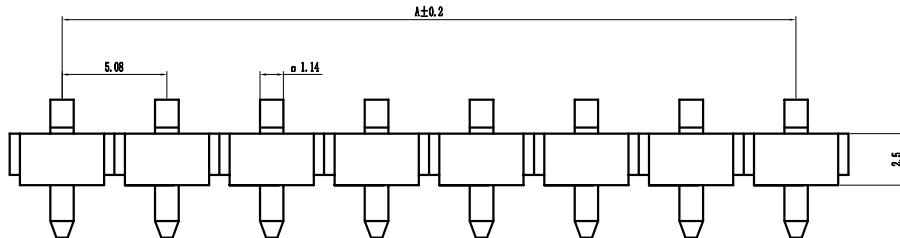
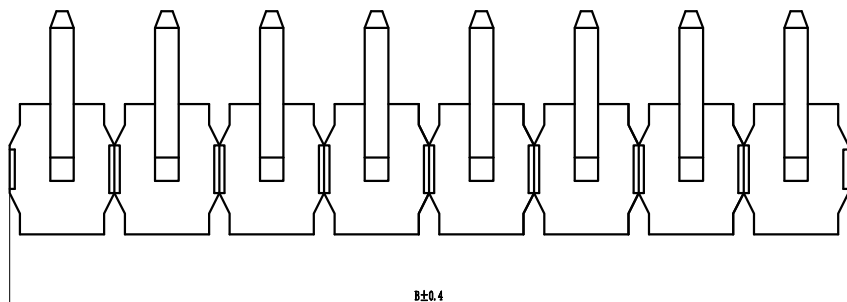


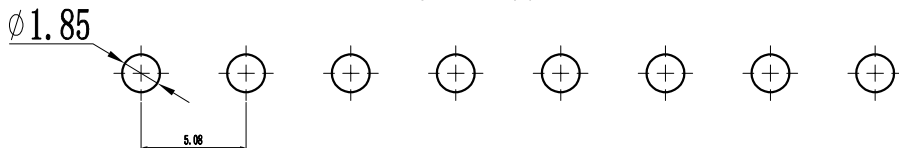
环保物料

Pin数	尺寸A	尺寸B
1X1	-	5.08
1X2	5.08	10.16
1X3	10.16	15.24
1X4	15.24	20.32
1X5	20.32	25.40
1X6	25.40	30.48
1X7	30.48	35.56
1X8	35.56	40.64
1X9	40.64	45.72
1X10	45.72	50.80
1X11	50.80	55.88
1X12	55.88	60.96
1X13	60.96	66.04
1X14	66.04	71.12
1X15	71.12	76.20
1X16	76.20	81.28
1X17	81.28	86.36
1X18	86.36	91.44
1X19	91.44	96.52
1X20	96.52	101.6



Specification:
 Current Rating : 7AMP
 Temperature Range : -40°Cto+105°C
 Contact Resistance : 20mΩ Max
 Insulation Resistance : 1000MΩ Min
 Withstanding Voltage : AC 500V
 Material:
 Insulator : Polyester (UL94V-0)
 Standard:PA6T/LCP
 Contact: Brass
 Plating : Au or Sn Over 50u" Ni

PCB LAYOUT



P 50 9D-XXX K X-XX-X-XXX				
①	②	③	④	⑤
① Series No: P=Pin Header F=Female Header B=Box Header E=Ejector Header	② Pitch: 08=0.80 10=1.00 12=L.27 20=2.00 25=2.54 39=3.96 50=5.08	③ Tail/Mounting Style: 9D=Right Angle DIP Type 9S=Straight SMT Type 0D=Straight DIP Type 0S=Horizontal SMT Type	④ No. of Pins: Single Row Double Row 101=1*1Pin 201=2*1Pin 102=1*2Pin 202=2*2Pin 140=1*40pin 240=2*40pin	⑤ Insulator Color: A:Black B:Brown C:Red D:Orange E:Yellow F:Green G:Blue H:Violet J:Gray K:White P:Light Blue
⑥ Material Type: A=PBT B-PA46 C-PA6T D-PA6T E-LCP	⑦ Plating Type: 0*-Sn-Au 1*-Ni 2*-Sn 3*-Matte-Tin 5*-Au 0A-Sn-Au 1u" 0F-Sn-Au 10u" 5A-Au 1u" 0B-Sn-Au 2u" 0C-Sn-Au 15u" 5B-Au 2u" 0C-Sn-Au 3u" 0H-Sn-Au 30u" 5C-Au 3u" 0D-Sn-Au 4u" 0I-Sn-Au 40u" 5D-Au 4u" 0E-Sn-Au 5u" 0J-Sn-Au 50u" 5J-Au 50u"	⑧ RoHS Request: 0:No Request 1:RoHS 2:HF (Halogen Free)	⑨ Customer Code	

GENERAL TOLERANCES		SCALE:	NAME	DATE	康导新能源 PART. NO: KDPH-0125							
LINEAR	ANGLES	1:1	黎腾	2017.06.16								
0.0±0.25	X° REF±6°	APPROVED	肖坤权	2017.06.16								
0.00±0.15	X° ±3°	DESIGNER	旷洪	2017.06.16								
REV.	REVISION RECORD	DATE	SIZE: A4	0.000±0.08	X° X'±2°	DRAWN	旷洪	2017.06.16	TITLE: Pitch5.08mm Pin Header, Single Plastic, Single Row, Right Angle Type	DWG. NO: ENDE0125	REV: AO	SHEET: 1/1



康导新能源

网址: www.dgonne.com 电话: 0769-85337633
 邮箱: 2850175986@qq.com 传真: 0769-85302827