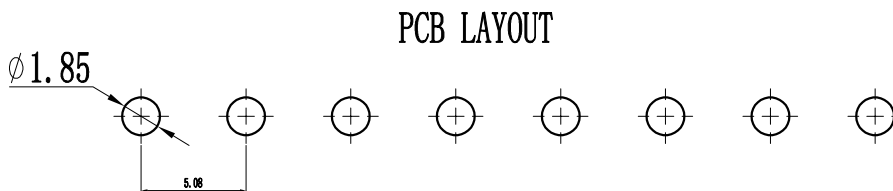
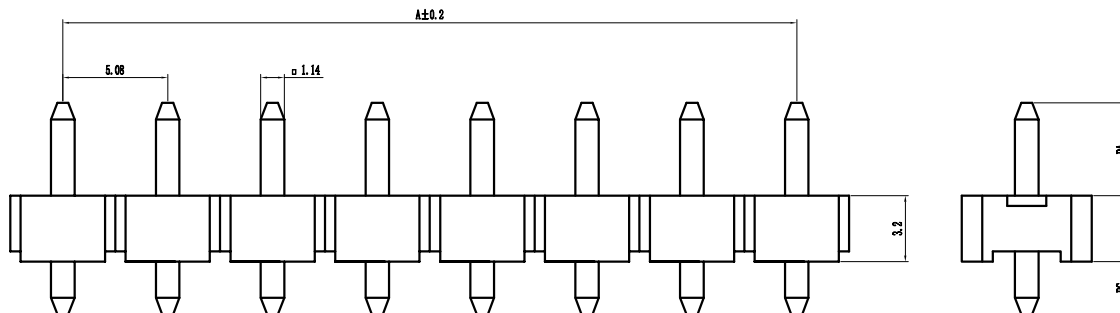
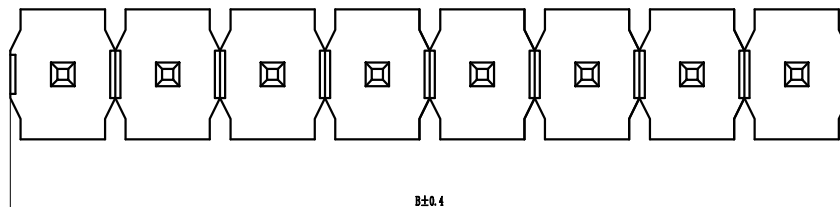


# 环保物料

Pin数	尺寸A	尺寸B
1X1	-	5.08
1X2	5.08	10.16
1X3	10.16	15.24
1X4	15.24	20.32
1X5	20.32	25.40
1X6	25.40	30.48
1X7	30.48	35.56
1X8	35.56	40.64
1X9	40.64	45.72
1X10	45.72	50.80
1X11	50.80	55.88
1X12	55.88	60.96
1X13	60.96	66.04
1X14	66.04	71.12
1X15	71.12	76.20
1X16	76.20	81.28
1X17	81.28	86.36
1X18	86.36	91.44
1X19	91.44	96.52
1X20	96.52	101.6



Specification:  
 Current Rating : 7AMP  
 Temperature Range : -40°Cto+105°C  
 Contact Resistance : 20mΩ Max  
 Insulation Resistance : 1000MΩ Min  
 Withstanding Voltage : AC 500V  
 Material:  
 Insulator : Polyester (UL94V-0)  
 Standard:PA6T/LCP  
 Contact: Brass  
 Plating : Au or Sn Over 50u" Ni

P 50 0D-XXX K X-XX-X-XXX				
①	②	③	④	⑤
① Series No: P=Pin Header F=Female Header B=Box Header E=jector Header	② Pitch: 08=0.80 10=1.00 12=1.27 20=2.00 25=2.54 30=3.96 50=5.08	③ Tail&Mounting Style: 90=Right Angle DIP Type 9S=Straight SMT Type 0D=Straight DIP Type 0S=Horizontal SMT Type	④ No. of Pins: Single Row Double Row 101=1*1Pin 201=2*1Pin 102=1*2Pin 202=2*2Pin 140=1*40pin 240=2*40pin	⑤ Insulator Color: A:Black B:Brown C:Red D:Orange E:Yellow F:Green G:Blue H:Violet J:Gray K:White P:Light Blue
⑥ Material Type: A-PBT B-PA46 C-PA6T D-PA9T E-LCP	⑦ Plating Type: 0*-Sn-Au 1*-Ni 2*-Sn 3*-Matte-Tin 5*-Au 0A-Sn-Au 1u" 0F-Sr-Au 10u" 5A-Au 1u" 0B-Sn-Au 2u" 0G-Sn-Au 15u" 6B-Au 2u" 0C-Sn-Au 3u" 0H-Sn-Au 30u" 5C-Au 3u" 0D-Sn-Au 4u" 0I-Sn-Au 40u" ! 0E-Sn-Au 5u" 0J-Sn-Au 50u" 5J-Au 50u"	⑧ RoHS Request: 0:No Request 1:RoHS 2:HF (Halogen Free)	⑨ Customer Code	

REV.	REVISION RECORD	DATE	UNIT: MM	GENERAL TOLERANCES		SCALE: 1:1	NAME	DATE
				LINEAR	ANGLES			
				0.00±0.15	X° ±3°	APPROVED	黎腾	2017.06.16
				0.00±0.08	X° X'±2°	DESIGNER	肖坤权	2017.06.16
						DRAWN	旷洪	2017.06.16

康导新能源  
 网址: www.dgoonne.com 电话: 0769-85337633  
 邮箱: 2850175986@qq.com 传真: 0769-85392827

PART. NO: KDPH-0123
DWG. NO: ENDE0123
REV: AO SHEET: 1/1