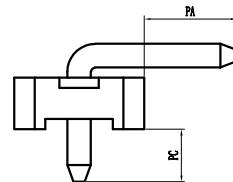
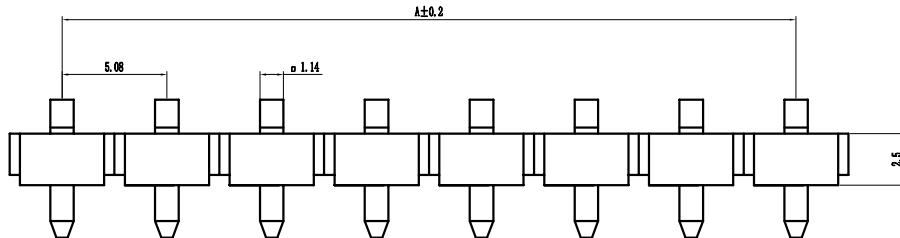
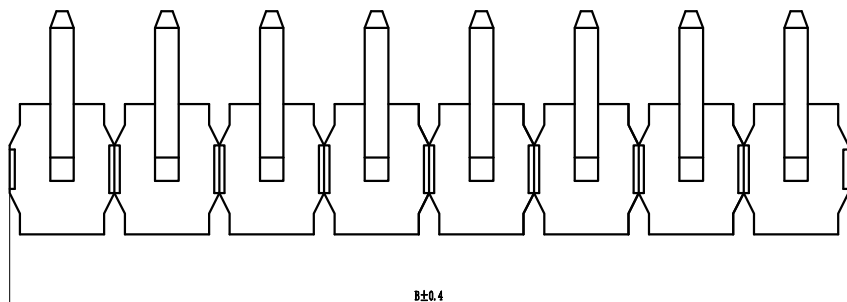


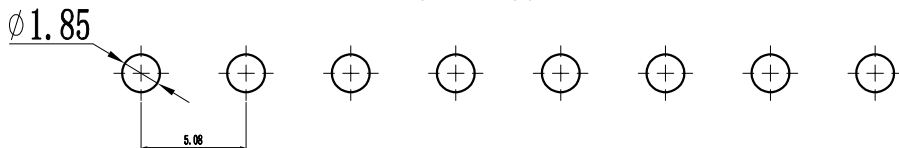
环保物料

Pin数	尺寸A	尺寸B
1X1	-	5.08
1X2	5.08	10.16
1X3	10.16	15.24
1X4	15.24	20.32
1X5	20.32	25.40
1X6	25.40	30.48
1X7	30.48	35.56
1X8	35.56	40.64
1X9	40.64	45.72
1X10	45.72	50.80
1X11	50.80	55.88
1X12	55.88	60.96
1X13	60.96	66.04
1X14	66.04	71.12
1X15	71.12	76.20
1X16	76.20	81.28
1X17	81.28	86.36
1X18	86.36	91.44
1X19	91.44	96.52
1X20	96.52	101.6



Specification:  
 Current Rating : 7AMP  
 Temperature Range : -40°Cto+105°C  
 Contact Resistance : 20mΩ Max  
 Insulation Resistance : 1000MΩ Min  
 Withstanding Voltage : AC 500V  
 Material:  
 Insulator : Polyester (UL94V-0)  
 Standard:PA6T/LCP  
 Contact: Brass  
 Plating : Au or Sn Over 50u" Ni

PCB LAYOUT



P 50 9D-XXX A X-XX-X-XXX				
①	②	③	④	⑤
① Series No:	P=Pin Header	08-0.80	9D-Right Angle DIP Type	Single Row Double Row
P=Female Header	10=1.00	9S-Straight SMT Type	101=1*1Pin	201=2*1Pin
B=Box Header	12=1.27	0D-Straight DIP Type	102=1*2Pin	202=2*2Pin
E=Ejector Header	20=2.00	0S-Horizontal SMT Type	i i	i i
	25=2.54		140=1*40pin	240=2*40pin
	39=3.96			
	50=5.08			
⑤ Insulator Color:	A:Black	B:Brown	C:Red	D:Orange
	E:Yellow	F:Green	G:Blue	H:Violet
	J:Gray	K:White	P:Light Blue	
⑥ Material Type:	A-PBT	0*-Sn-Au	1*-Ni	2*-Sn
B-PA46	0A-Sn-Au	1u"	0F-Sn-Au	10u"
C-PA6T	0B-Sn-Au	2u"	0C-Sn-Au	15u"
D-PA9T	0C-Sn-Au	3u"	0H-Sn-Au	30u"
E-LCP	0D-Sn-Au	4u"	0I-Sn-Au	40u"
	0E-Sn-Au	5u"	0J-Sn-Au	50u"
			5J-Au	50u"
⑦ Plating Type:	0*-Sn-Au	1*-Ni	2*-Sn	3*-Matte-Tin
	4*-Au	5*-Au		
⑧ RoHS Request:	0:No Request	1:RoHS	2:HF (Halogen Free)	
⑨ Customer Code				

GENERAL TOLERANCES		SCALE:	NAME	DATE
LINEAR	ANGLES	1:1		
0.0±0.25	X° REF±6°	APPROVED	黎腾	2017.06.16
0.00±0.15	X° ±3°	DESIGNER	肖坤权	2017.06.16
0.000±0.08	X° X'±2°	DRAWN	旷淇	2017.06.16

**康导新能源**  
 网址: www.dgconne.com 电话: 0769-85337633  
 邮箱: 2850175986@qq.com 传真: 0769-85392827

TITLE:  
 Pitch5.08mm Pin Header, Single Plastic,  
 Single Row, Right Angle Type

PART. NO:	KDPH-0122
DWG. NO:	ENDE0122
REV:	AO
SHEET:	1/1