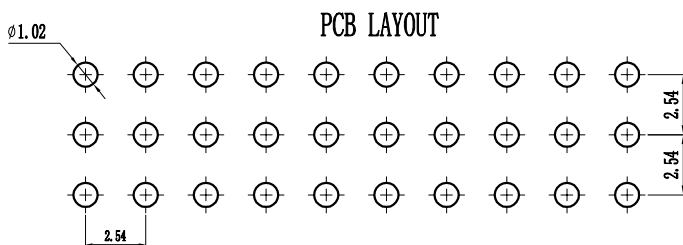
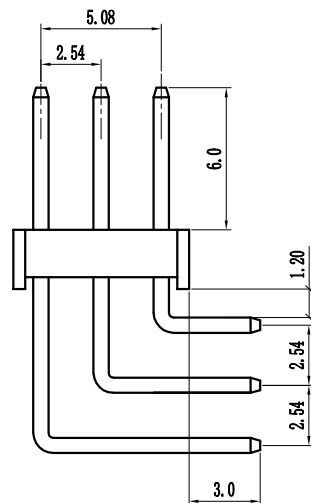
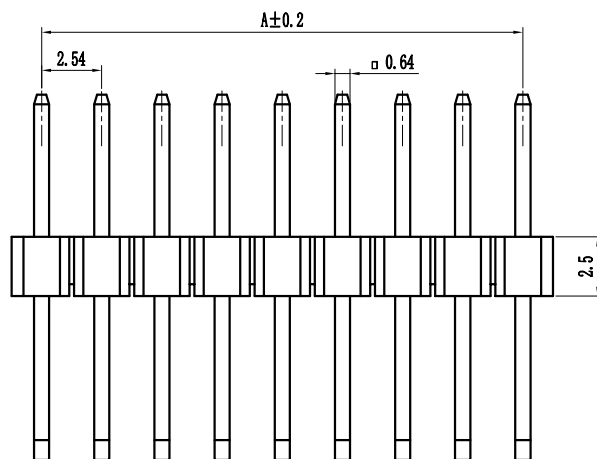
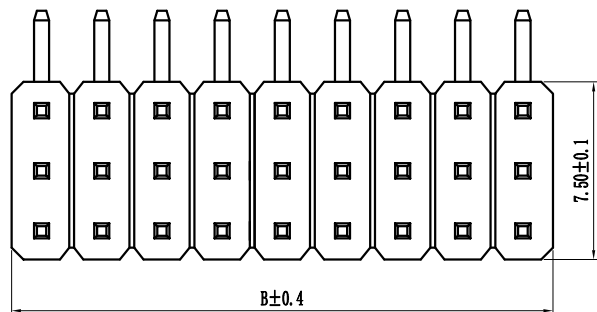


环保物料

Pin数	尺寸A	尺寸B
3X1	-	2.54
3X2	2.54	5.08
3X3	5.08	7.62
3X4	7.62	10.16
3X5	10.16	12.70
3X6	12.70	15.24
3X7	15.24	17.78
3X8	17.78	20.32
3X9	20.32	22.86
3X10	22.86	25.40
3X11	25.40	27.94
3X12	27.94	30.48
3X13	30.48	33.02
3X14	33.02	35.56
3X15	35.56	38.10
3X16	38.10	40.64
3X17	40.64	43.18
3X18	43.18	45.72
3X19	45.72	48.26
3X20	48.26	50.80
3X21	50.80	53.34
3X22	53.34	55.88
3X23	55.88	58.42
3X24	58.42	60.96
3X25	60.96	63.50
3X26	63.50	66.04
3X27	66.04	68.58
3X28	68.58	71.12
3X29	71.12	73.66
3X30	73.66	76.20
3X31	76.20	78.74
3X32	78.74	81.28
3X33	81.28	83.82
3X34	83.82	86.36
3X35	86.36	88.90
3X36	88.90	91.44
3X37	91.44	93.98
3X38	93.98	96.52
3X39	96.52	99.06
3X40	99.06	101.60



Specification:

Current Rating : 3.0AMP

Temperature Range : -40°Cto+105°C

Contact Resistance : 20mΩ Max

Insulation Resistance : 1000MΩ Min

Withstanding Voltage : AC 1000V

Material:

Insulator : Polyester (UL94V-0)

Standard:PBT/PA6T/LCP

Contact: Brass

Plating : Au or Sn Over 50u" Ni

P 25 9D-XXX X X-XX-X-XXX
① ② ③ ④ ⑤ ⑥ ⑦ ⑧ ⑨

① Series No: P=Pin Header F=Female Header B=Box Header E=Injector Header	② Pitch: 08=0.80 10=1.00 12=1.27 20=2.00 25=2.54 30=3.96 50=5.08	③ Tail&Mounting Style: 9D=Right Angle DIP Type 9S=Straight SMT Type 0D=Straight DIP Type 0S=Horizontal SMT Type	④ No. of Pins: Single Row Double Row 101=1*1Pin 201=2*1Pin 102=1*2Pin 202=2*2Pin 140=1*40pin 240=2*40pin	⑤ Insulator Color: A:Black B:Brown C:Red D:Orange E:Yellow F:Green G:Blue H:Violet J:Gray K:White P:Light Blue
--	---	---	--	--

⑥ Material Type: A-PBT B-PA46 C-PA6T D-PA9T E-LCP	⑦ Plating Type: 0*-Sn-Au 1*-Ni 2*-Sn 3*-Matte-Tin 5*-Au 0A-Sn-Au 1u" 0F-Sr-Au 10u" 5A-Au 1u" 0B-Sn-Au 2u" 0G-Sn-Au 15u" 6B-Au 2u" 0C-Sn-Au 3u" 0H-Sn-Au 30u" 5C-Au 3u" 0D-Sn-Au 4u" 0I-Sn-Au 40u" ! 0E-Sn-Au 5u" 0J-Sn-Au 50u" 5J-Au 50u"	⑧ RoHS Request: 0:No Request 1:RoHS 2:HF (Halogen Free)	⑨ Customer Code
--	---	--	-----------------

REV.	REVISION RECORD	DATE	UNIT: MM	GENERAL TOLERANCES		SCALE: 1:1	NAME	DATE
				LINEAR	ANGLES			
				0.00±0.15	X° REF±6°	APPROVED	黎腾	2017.06.16
				0.00±0.08	X° X'±2°	DESIGNER	肖坤权	2017.06.16
						DRAWN	旷淇	2017.06.16

康导新能源
网址: www.dgconne.com 电话: 0789-85337633
邮箱: 2850175888@qq.com 传真: 0789-85392827

PART. NO:	KDPH-0113
DWG. NO:	ENDE0113
REV:	AO
SHEET:	1/1