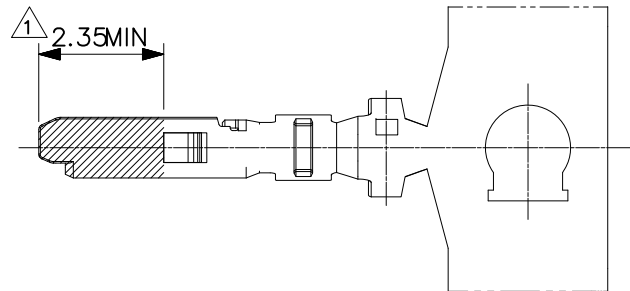
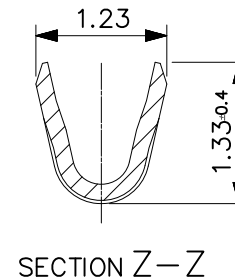
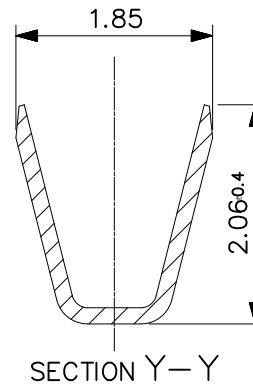
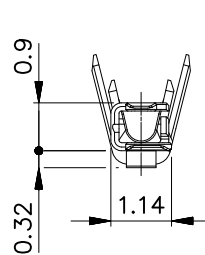
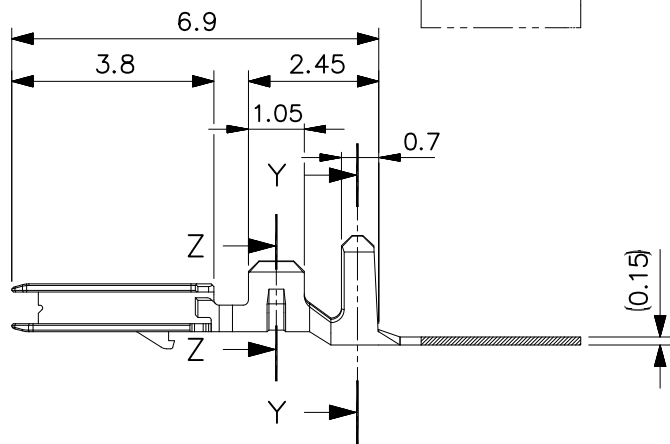
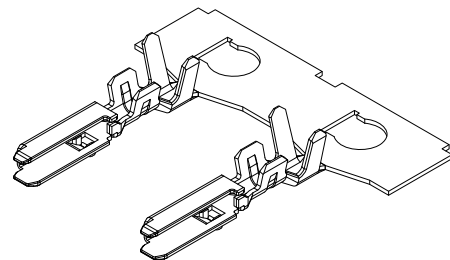
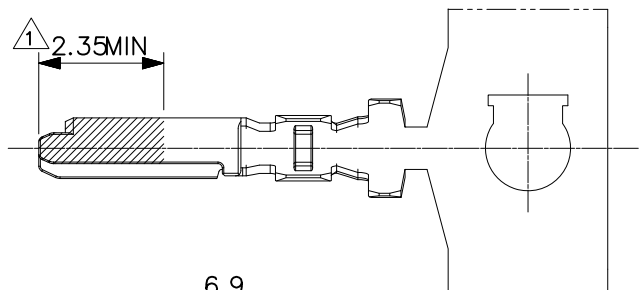


环保物料

主要技术参数 Main Specifications

接触电阻 (Contact resistance): $\leq 20m\Omega$
 绝缘电阻 (Insulation resistance): $\geq 1000M\Omega$
 额定电压 (Rated voltage): 150V AC DC
 额定电流 (Rated current): 3.0A AC DC
 耐电压 (Withstand Voltage): 500V AC/minute
 温度范围 (Temperature Range): $-25^{\circ}C \sim +85^{\circ}C$



Wire Range	Insulation O.D.	Material	Finish	Qty/Reel
AWG #24~#28	0.78-1.28mm	Copper Alloy	Tin-plated	

GENERAL TOLERANCES		SCALE: 1:1	NAME	DATE
LINEAR	ANGLES			
0.0±0.35	X° REF±6°	APPROVED	黎腾	2017.06.16
0.00±0.25	X° ±3°	DESIGNER	肖坤权	2017.06.16
0.000±0.15	X° X'±2°	DRAWN	旷淇	2017.06.16



PART. NO:	21506T1
DWG. NO:	
REV:	A0
SHEET:	1/1