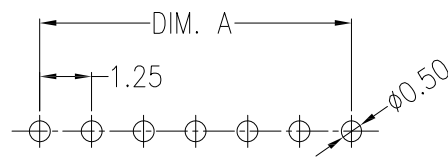
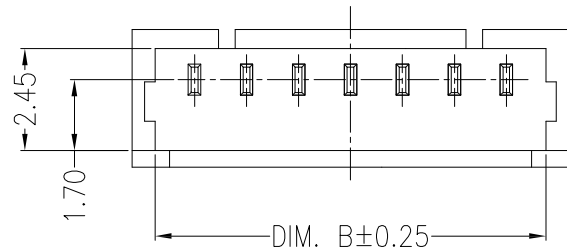
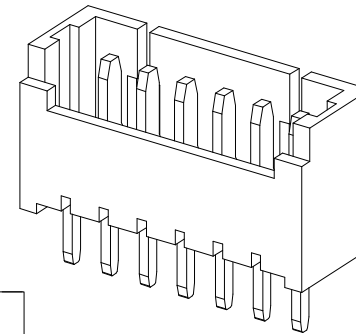
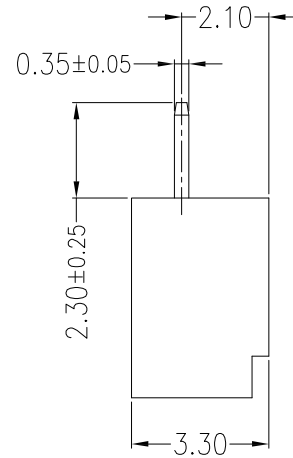
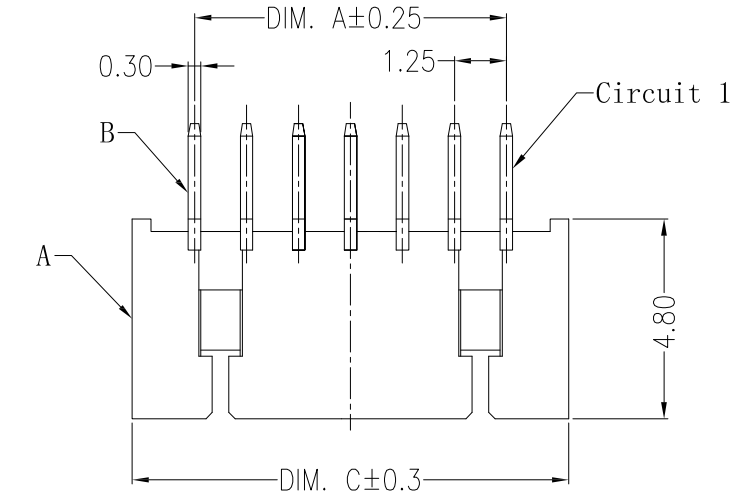


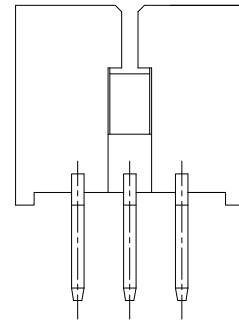
环保物料

主要技术参数 Main Specifications

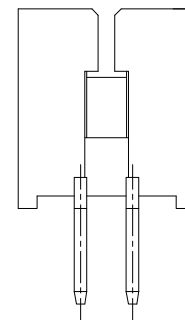
线数 (Poles): 02 to 16
 接触电阻 (Contact resistance): $\leq 20m\Omega$
 绝缘电阻 (Insulation resistance): $\geq 100M\Omega$
 额定电压 (Rated voltage): 125 V AC DC
 额定电流 (Rated current): 1.0A AC DC
 耐电压 (Withstand Voltage): 500V AC/minute
 温度范围 (Temperature Range): $-25^{\circ}C \sim +85^{\circ}C$



SUGGESTED PCB LAYOUT
(COMPONENT SIDE)



3P



2P

| Circuits | Dimensions (mm) | | |
|----------|-----------------|--------|--------|
| | DIM. A | DIM. B | DIM. C |
| 02 | 1.25 | 3.20 | 4.25 |
| 03 | 2.50 | 4.45 | 5.50 |
| 04 | 3.75 | 5.70 | 6.75 |
| 05 | 5.00 | 6.95 | 8.00 |
| 06 | 6.25 | 8.20 | 9.25 |
| 07 | 7.50 | 9.45 | 10.50 |
| 08 | 8.75 | 10.70 | 11.75 |
| 09 | 10.00 | 11.95 | 13.00 |
| 10 | 11.25 | 13.20 | 14.25 |
| 11 | 12.50 | 14.45 | 15.50 |
| 12 | 13.75 | 15.70 | 16.75 |
| 13 | 15.00 | 16.95 | 18.00 |
| 14 | 16.25 | 18.20 | 19.25 |
| 15 | 17.50 | 19.45 | 20.50 |
| 16 | 18.75 | 20.70 | 21.75 |

| | | | | |
|------|-----------|---------|----------|-----------------------|
| B | CONTACT | 2~16PCS | Brass | Sn-plated |
| A | PEDESTAL | 1 PCS | PA46/LCP | UL 94V-0, COLOR:BEIGE |
| ITEM | COMPONENT | Q'TY | MATERIAL | FINISH |

| | | | | |
|--------------------|-------------|------------|------|------------|
| GENERAL TOLERANCES | | SCALE: 1:1 | NAME | DATE |
| LINEAR | ANGLES | APPROVED | 黎腾 | 2017.06.16 |
| 0.00 ± 0.25 | X° REF ± 6° | DESIGNER | 肖坤权 | 2017.06.16 |
| 0.00 ± 0.15 | X° X' ± 2° | DRAWN | 旷淇 | 2017.06.16 |



| | | |
|-----------|--------|------------|
| PART. NO: | 21251A | |
| DWG. NO: | | |
| REV: | A0 | SHEET: 1/1 |